

SANCTION STRENGTH

The total Battalion Strength of different post of this unit including Central Motor Workshop is as shown below :-

| | | |
|---------------------------|---|------------|
| Gazetted Officers | - | 11 |
| Subedars | - | 12 |
| Jamadars | - | 28 |
| Havildars | - | 130 |
| Naiks | - | 45 |
| Lance Naiks | - | 83 |
| Constables | - | 746 |
| Followers | - | 87 |
| Ministerial Staffs | - | 10 |
| Medical Staffs | - | 5 |

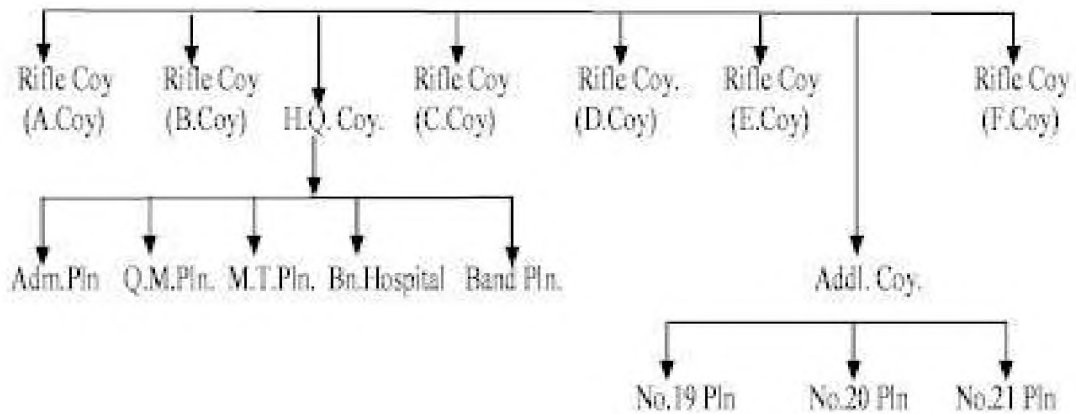
Total : - - 1157
(one thousand one hundred fifty seven)

BREAK UP :-

The break up of the Battalion is as per statement below :-

| | | | |
|--------------------------|------------------------|---|---|
| Commandant | - Junior Scale IPS/MPS | - | 1 |
| Second In Command | - „ | - | 1 |
| Adjutant | - „ | - | 1 |
| Quarter Master | - „ | - | 1 |
| Subedar Major | - A.B. Inspector | - | 1 |
| Jamadar Adjutant | - A.B. Sub-Inspector | - | 1 |
| Battalion Havilder Major | - Havilder | - | 1 |
| Head Assistant | | - | 1 |
| Accountants | | - | 1 |
| U.D. Assistants | | - | 2 |
| Typist/LDA | | - | 4 |
| Duftry | | - | 1 |

1st MLP Bn.



GOVERNMENT ACCOMMODATION

List Of MGCC Buildings and PWD Buildings :

| <i>Sl No.</i> | <i>Name of Bungalows / Quarter</i> | <i>Nos</i> | <i>Constructed by whom.</i> |
|---------------|---|------------|-----------------------------|
| 1. | Commandant Bungalow Single Store | - 1 | MGCC |
| 2. | Assistant. Commandant Bungalow | - 7 | -Do- |
| 3. | L / S 4 (four) Unit Family Quarter | - 38 | -Do- |
| 4. | L / S 6 (six) Unit Family Quarter | - 6 | -Do- |
| 5. | U / S 4 (four) Unit Family Quarter | - 6 | -Do- |
| 6. | U / S 6 (six) Unit Family Quarter | - 1 | -Do- |
| 7. | U/S Single – Unit Family Quarter | - 14 | PWD |
| 8. | L/S Assam Type 6 (six) Unit Family Quarters | - 4 | -Do- |
| 9. | Barrack Assam Type C.I. Sheet roofing | - 4 | -Do- |
| 10. | Follower 4(four) Unit C.I. Sheet roofing | - 1 | Department |
| 11. | Follower Kacha Quarter C.I. Sheet roofing | - 21 | -Do- |
| 12. | L.P.G Go down | - 1 | -Do- |
| 13. | Carpenter Workshop. | - 1 | -Do- |
| 14. | R.C's Barrack C.I Sheet roofing. | - 3 | -Do- |

| | | | | |
|-----|---------------------------------|---|---|-----------|
| 15. | Unit Canteen & Gas Office (LPG) | - | 1 | -Do- |
| 16. | Barrack 3 Store | - | 4 | MGCC |
| 17. | Magazine Guard 2 (two) Stories | - | 1 | -Do- |
| 18. | Commandant Office Single Storey | - | 1 | -Do- |
| 19. | M.T. Office Single Storey | - | 1 | -Do- |
| 20. | Drill Sheed Single Storey | - | 1 | -Do- |
| 21. | R/C Barrack C.I Sheet roofing. | - | 7 | -Do- |
| 22. | Barrack C.I Sheet roofing. | - | 1 | -Do- |
| 23. | M.T. Garage | - | 2 | -Do- |
| 24. | Kitchen | - | 2 | -Do- |
| 25. | L/S 4 Unit Family Quarter | - | 1 | M/ Scheme |
| 26. | L/S 6 Unit Family Quarter | - | 1 | M/ Scheme |